



Using Google Tango with ROS

21/09/2017 ROSCon

By Ruben Smits and Perrine Aguiar

What is Google Tango?

Tango Stack

- Motion Tracking -- *VIO*
- Area Learning -- *Localization Maps*
- Depth Perception -- *Point clouds*
- 3DR and other support libraries



What is Google Tango?

Tango Platforms

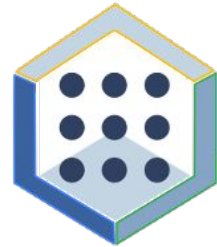
- **Sensors**
 - Wide-angle, global shutter camera (640x480)
 - Depth camera (172x144, 5 Hz, 5m range)
 - Color camera (23 MP)
 - IMU
- **Available Tango devices:**
 - Tango development tablets (EOL)
 - Lenovo Phab2Pro
 - Asus Zenfone AR
 - Inuitive devices (USB device!)



What is Tango ROS Streamer?

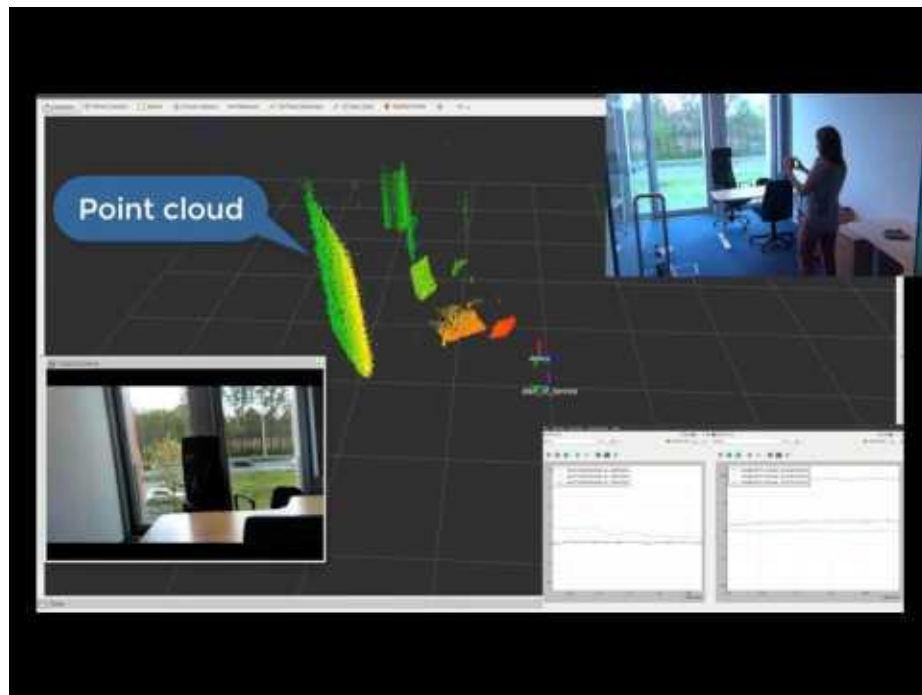
Main goal: Be able to use the Google Tango technology on your ROS-enabled robot.

- App available on PlayStore for free
- Fully open-sourced on Github
- Tutorials on http://wiki.ros.org/tango_ros_streamer



What does Tango ROS Streamer provide?

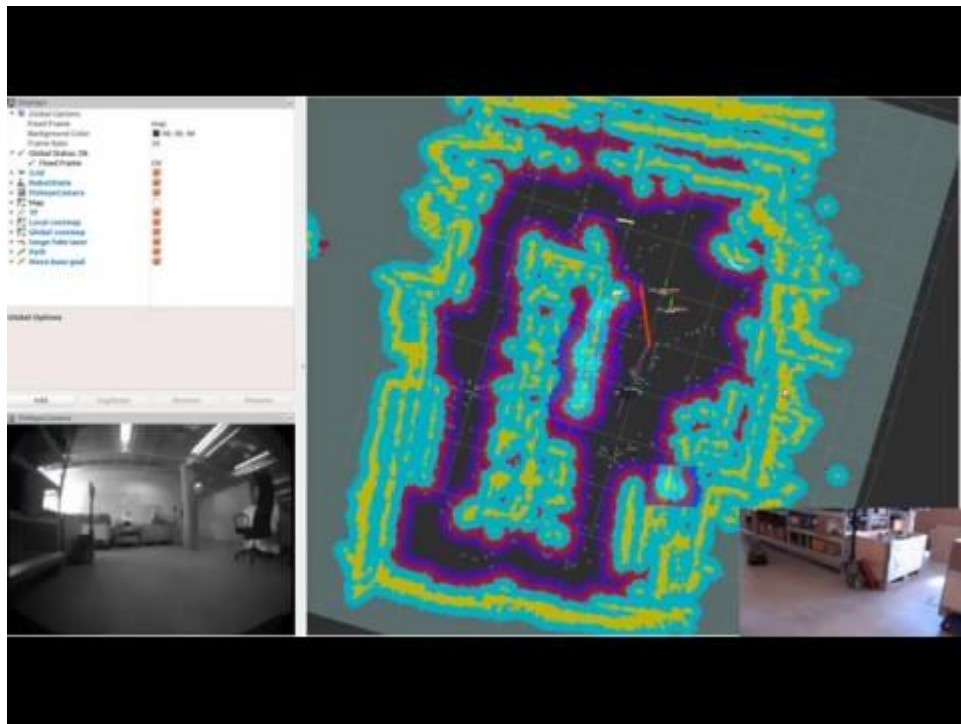
- A cross platform roscpp nodelet
 - Publishes
 - 6D pose of the device
 - Images
 - Pointcloud
 - Meshes
 - Occupancy grid
 - All Tango configuration can be done through ROS parameters.
 - Provides ROS services to handle
 - Tango lifecycle
 - Maps
- ROS Android application to manage the nodelet



How can you use Tango ROS Streamer for your robot?

Example: Turtlebot navigation using existing ROS tools/libraries and Tango ROS Streamer:

- Mapping and localization using Tango
- Obstacle avoidance using Tango point cloud
- Navigation with ROS Nav Stack



Want to learn more?

Come visit us at the Tango booth

Thanks for listening !